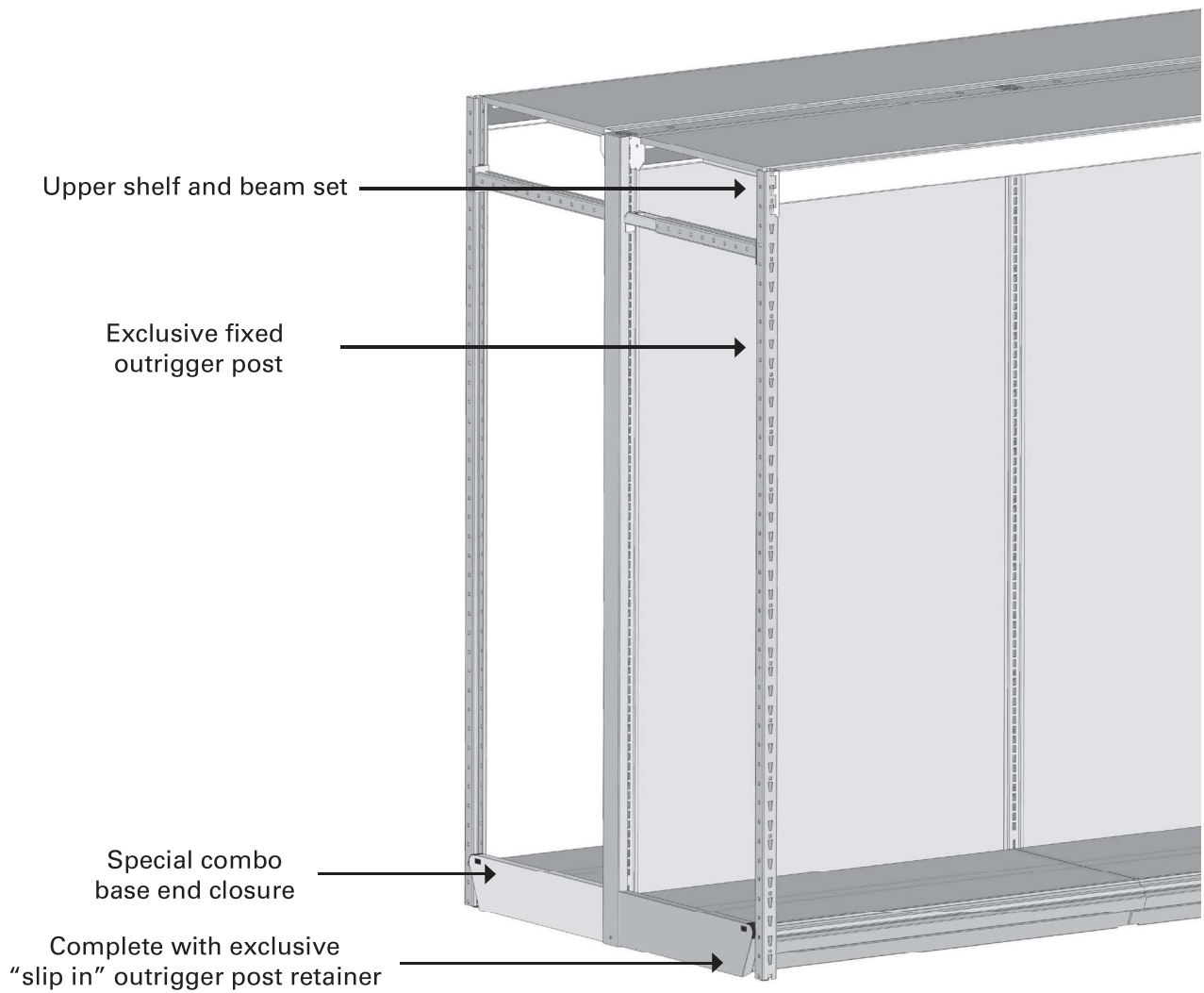


## COMBOSHELVING

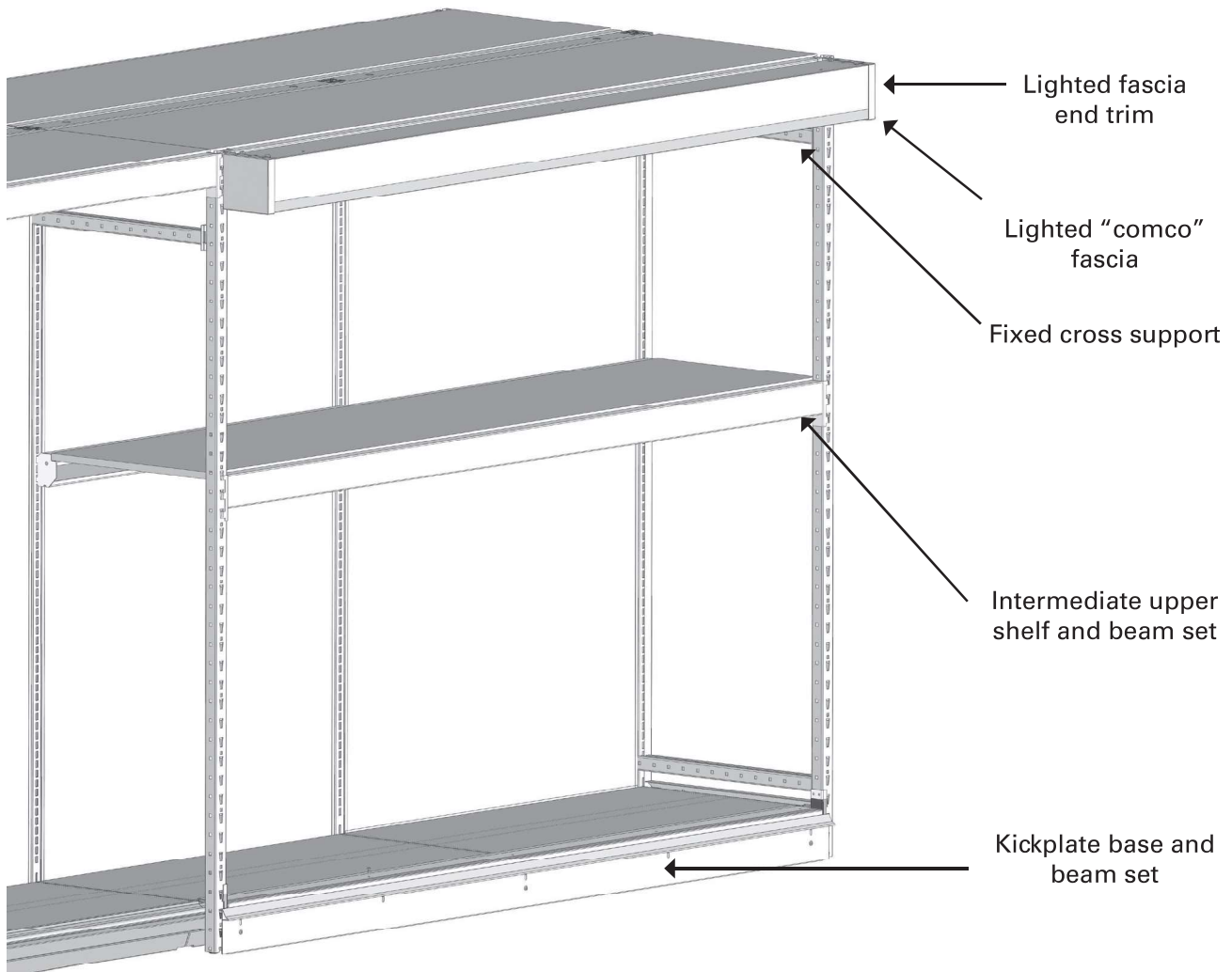
Create a dramatic warehouse presentation with the Handy Store Fixtures Comboshelving system. Comboshelving parts customize your shelving for the “full warehouse” look or as a backup top shelf system. The Handy Store Fixtures Comboshelving system features many product innovations, such as a fully adjustable outrigger support system, only one part will fit all basic shelving units from 17” base depth to 27” base depth. In addition, as merchandising changes, the Handy Store Fixtures Comboshelving system can be moved anywhere in the store — a real advantage. We also offer many shelf options and none of them have to be “notched” like other systems. These are just a few of the Handy Store Fixtures Comboshelving system advantages. Of course, its available in all Handy Store Fixtures standard and optional powder coat finishes.

# COMBOSHELVING



## COMBOSHELVING

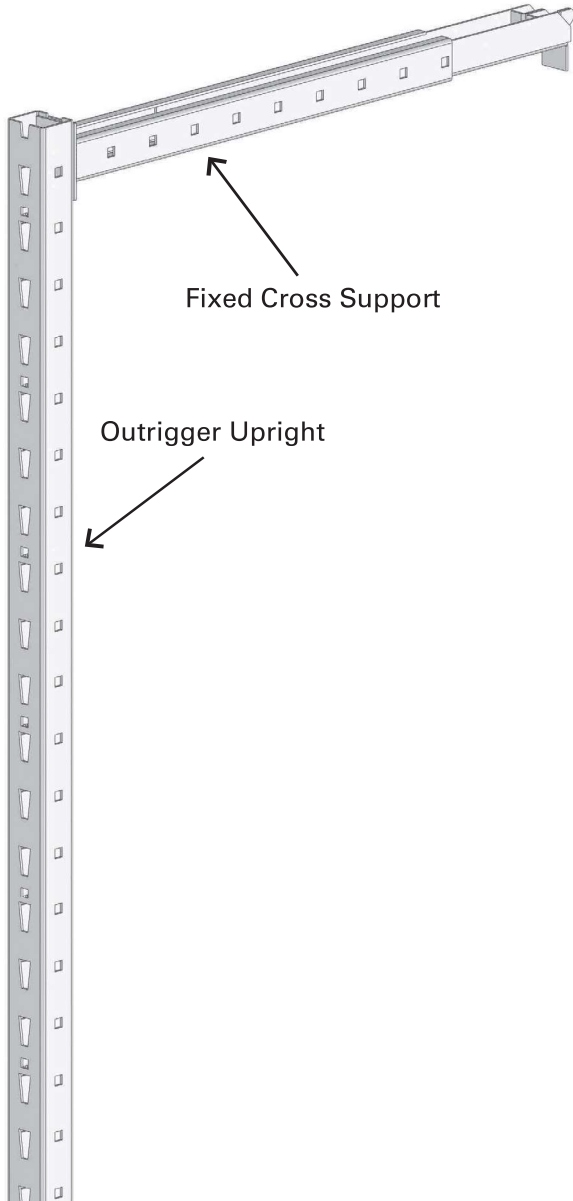
Z Line shelving provides the strongest base yet for Handy Store Fixtures "Warehouse look" shelving. With the addition of the new "warehouse type" parts, our new Z Line display shelving is transformed into an exciting mass merchandiser or a practical stock above merchandising system.



## COMBOSHELVING

With the addition of intermediate shelf and beam sets, a total warehouse look is in place. To complete the transformation, lighted fascia can be added. Then, finish your Comboshelving with our exclusive Floating Kickplate and Base Beam set.

# OUTRIGGER UPRIGHT & SPREADER

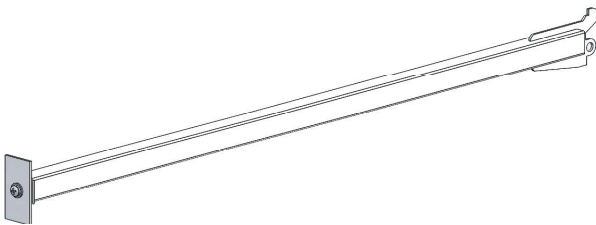


## OUTRIGGER UPRIGHT

Strong 14 gauge steel rollformed and durably powder coated, Handy Store Fixtures Outrigger uprights are available in all Handy Store Fixtures standard colors and optional colors. Includes hardware and leveler.

Upright capacity is 4,000 lbs. column load.

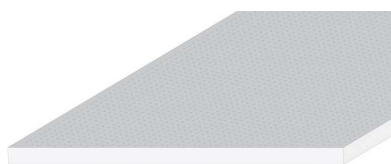
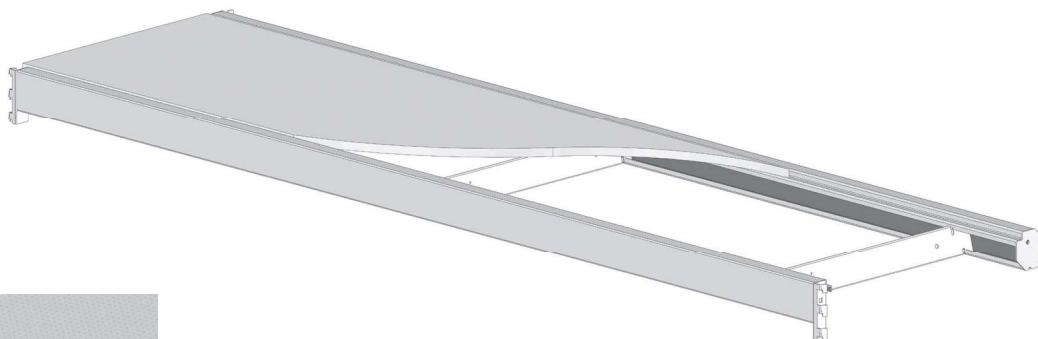
Item#	WSDPU	Height
Prefix	Height	
WSDPU	78"	
	84"	
	90"	
	96"	
	108"	
	120"	



## FIXED CROSS SUPPORT

Fixed Cross Supports include mount plate and hardware. Outrigger uprights are available in all Handy Store Fixtures standard colors and optional colors.

Item#		
WSDPU	FS	STD
		Depth Option
Prefix	Base Depth	Options
WSDPU FS STD	12" - 36" in 1" increments	Leave blank - Gondola Guard Base EB - Extended Base



Particle Board  
(Part reference #1)

Shelf Type  
E - Extended  
B - Bullnose  
G - Gondola Guard



Plywood  
(Part reference #2)



Melamine  
(Part reference #3)



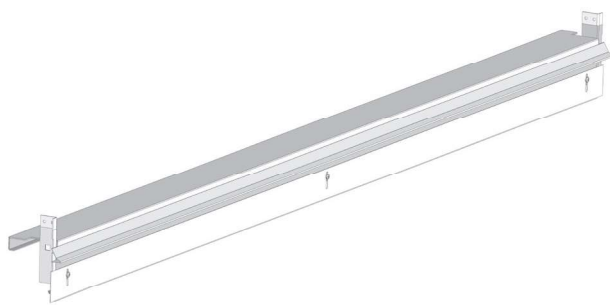
Wire  
(Part reference #4)

## SHELF AND BEAM SET

Available in particle board, plywood, melamine and 3x3 OC Wire. Each shelf requires cross supports & front and rear beams ordered separately. Each beam set functions as for top and intermediate levels.

Item#			WSDPWS			<div></div>	<div></div> <div></div>	<div></div> <div></div>	<div></div>	<div></div> <div></div>
						Style	Length	Base	Type	Color
Prefix	Style	Length	Nominal Base Size			Type		Color		
WSDPWS	1 - Standard	36"	12" - 30"			E - Extended		See page 2-8 for color options		
	Particle Board	48"				B - Bullnose				
	2 - Plywood	72"				G - Gondola Guard				
	3 - Melamine	96"								
	4 - Wire									

# BASE / BEAM SET



## COMBOSHELVING KICKPLATE BASE BEAM SET

Comboshelving Kickplate Beams are used at the floor level, flush with base shelf. Kickplate beams feature exclusive "adjustable kickpanel" that levels a floor. In addition, the top return closes the gap between the base shelf and the beam. Kickplate Base Beam is optional and requires gondola guard shoes to function.

Item#	WSDP - BB			Height
Prefix	Height			
WSDP-BB	36" - 96" in 12" increments			

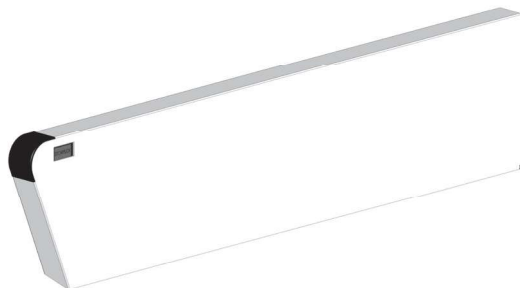


Standard Base

## BASE END CLOSERS

Handy Store Fixtures combo merchandising systems require the use of special base End Covers. Standard and Gondola Guard styles are available.

Item#	WSDPBEC			Type	Size
Prefix	Type	Size			
WSDPBEC	EX - Standard GG - Gondola Guard	16" - 33"			



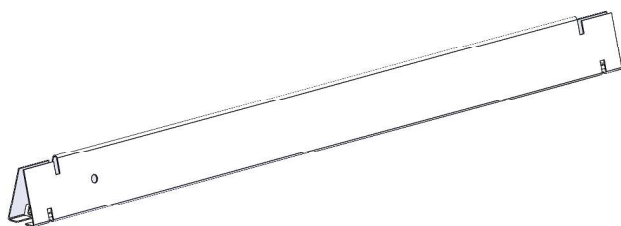
Gondola Guard™

**FRONT BEAM**

Item#	WSDPFB	<input type="text"/> <input type="text"/>
		Length
Prefix	Length	
WSDPFB	36" - 96" in 12" increments	

**REAR BEAM**

Item#	WSDPRB	<input type="text"/> <input type="text"/>
		Length
Prefix	Length	
WSDPRB	36" - 96" in 12" increments	

**FIXED SHELF CROSS SUPPORT CHANNELS**

Supports combo shelf, fixed to fit base shelf depths 12"-30" in 1" increments.

Item#		
721578	<input type="text"/> <input type="text"/>	STD <input type="text"/> <input type="text"/>
	Style	Depth
Prefix	Style	Base Depth
721578	GG - Guondola Guard EB - Extended Base	12" - 30"